

**BALDOR • RELIANCE**

---

# Customer information packet

## JL1323A

3HP, 3450RPM, 1PH, 60HZ, 56J, 3535LC, OPEN, F1

Class - None

Division - Not Applicable

## Specifications

Enclosure	OPEN
Frame	56J
Frame Material	Steel
Frequency	60.00 Hz
Haz Area Class and Group	None
Haz Area Division	Not Applicable
Motor Letter Type	Cap Start, Cap Run
Output @ Frequency	3.000 HP @ 60 HZ
Phase	1
Synchronous Speed @ Frequency	3600 RPM @ 60 HZ
Voltage @ Frequency	230.0 V @ 60 HZ
Agency Approvals	UR CSA
Ambient Temperature	40 °C
Auxillary Box	No Auxillary Box
Auxillary Box Lead Termination	None
Base Indicator	No Mounting
Bearing Grease Type	Polyrex EM (-20F +300F)
Blower	None
Current @ Voltage	13.000 A @ 230.0 V
Design Code	L
Drip Cover	Drip Cover
Duty Rating	CONT
Efficiency @ 100% Load	82.5 %
Electrically Isolated Bearing	Not Electrically Isolated
Feedback Device	NO FEEDBACK
Front Face Code	Terminal Panel
Front Shaft Indicator	None
Heater Indicator	No Heater
High Voltage Full Load Amps	13.0 a
Insulation Class	F
Inverter Code	Not Inverter

## Part detail

Revision	BN
Type	AC
Mech. spec.	35H992
Base	
Status	PRD/A
Elec. spec.	35WGY105
Layout	35LYH992
Eff. date	10-08-2024
CD Diagram	CD0661
Poles	02
Leads	2#14 A PH,2#18 B&J
Proprietary	False
Created date	06-22-2007

<b>KVA Code</b>	K
<b>Lifting Lugs</b>	No Lifting Lugs
<b>Locked Bearing Indicator</b>	Locked Bearing
<b>Motor Lead Exit</b>	Terminal Panel
<b>Motor Lead Quantity/Wire Size</b>	2 @ 14 AWG, A PH
<b>Motor Lead Termination</b>	None
<b>Motor Standards</b>	NEMA
<b>Motor Type</b>	3535LC
<b>Mounting Arrangement</b>	F1
<b>Number of Poles</b>	2
<b>Overall Length</b>	14.13 IN
<b>Power Factor</b>	93
<b>Product Family</b>	General Purpose
<b>Pulley End Bearing Type</b>	Ball
<b>Pulley Face Code</b>	C-Face
<b>Pulley Shaft Indicator</b>	Ext Thread
<b>Rodent Screen</b>	None
<b>RoHS Status</b>	ROHS COMPLIANT
<b>Service Factor</b>	1.15
<b>Shaft Diameter</b>	0.625 IN
<b>Shaft Extension Location</b>	Pulley End
<b>Shaft Ground Indicator</b>	No Shaft Grounding
<b>Shaft Rotation</b>	Fixed Opposite Standard
<b>Shaft Slinger Indicator</b>	No Slinger
<b>Speed</b>	3450 rpm
<b>Speed Code</b>	Single Speed
<b>Starting Method</b>	Direct on line
<b>Thermal Device - Bearing</b>	None
<b>Thermal Device - Winding</b>	Do Not Use Eve-Not Valid
<b>Vibration Sensor Indicator</b>	No Vibration Sensor
<b>Winding Thermal 1</b>	Automatic Thermal Overload
<b>Winding Thermal 1 Location</b>	SB
<b>Winding Thermal 2</b>	None

**Nameplate**

<b>NP1257L</b>									
<b>CAT.NO.</b>	JL1323A								
<b>SPEC.</b>	35H992Y105								
<b>HP</b>	3								
<b>VOLTS</b>	230								
<b>AMP</b>	13								
<b>RPM</b>	3450								
<b>FRAME</b>	56J		<b>HZ</b>	60		<b>PH</b>	1		
<b>SER.F.</b>	1.15	<b>CODE</b>	K	<b>DES</b>	L	<b>CL</b>	F		
<b>NEMA-NOM-EFF</b>	82.5	<b>PF</b>	93						
<b>RATING</b>	40C AMB-CONT								
<b>CC</b>									
<b>DE</b>	6205	<b>ODE</b>	6203						
<b>ENCL</b>	OPEN	<b>SN</b>							

**AC Induction Motor Performance Data**

Record # 61978

Typical performance - not guaranteed values

Winding: 35WGY105-R004		Type: 3535LC	Enclosure: OPEN		
<b>Nameplate Data</b>			<b>230 V, 60 Hz: Single Voltage Motor</b>		
Rated Output (HP)	3	Full Load Torque	4.5 LB-FT		
Volts	230	Start Configuration	direct on line		
Full Load Amps	13	Breakdown Torque	15.5 LB-FT		
R.P.M.	3450	Pull-up Torque	13 LB-FT		
Hz	60 Phase	1	Locked-rotor Torque	13 LB-FT	
NEMA Design Code	L	KVA Code	K	Starting Current	108 A
Service Factor (S.F.)	1.15	No-load Current	5 A		
NEMA Nom. Eff.	82.5	Power Factor	93	Line-line Res. @ 25°C	0.617 Ω A Ph 2.54 Ω B Ph
Rating - Duty	40C AMB-CONT		Temp. Rise @ Rated Load	49°C	
S.F. Amps			Temp. Rise @ S.F. Load	56°C	
			Locked-rotor Power Factor	77.4	
			Rotor inertia	0.0968 LB-FT <sup>2</sup>	

**Load Characteristics 230 V, 60 Hz, 3 HP**

% of Rated Load	25	50	75	100	125	150	S.F.
Power Factor	61	80	87	91	92	93	92
Efficiency	68.8	78.5	82.1	82.5	82.6	81	82.6
Speed	3578	3556	3535	3517	3487	3450	3499
Line amperes	6	7.9	10.3	13	16	19	14.8

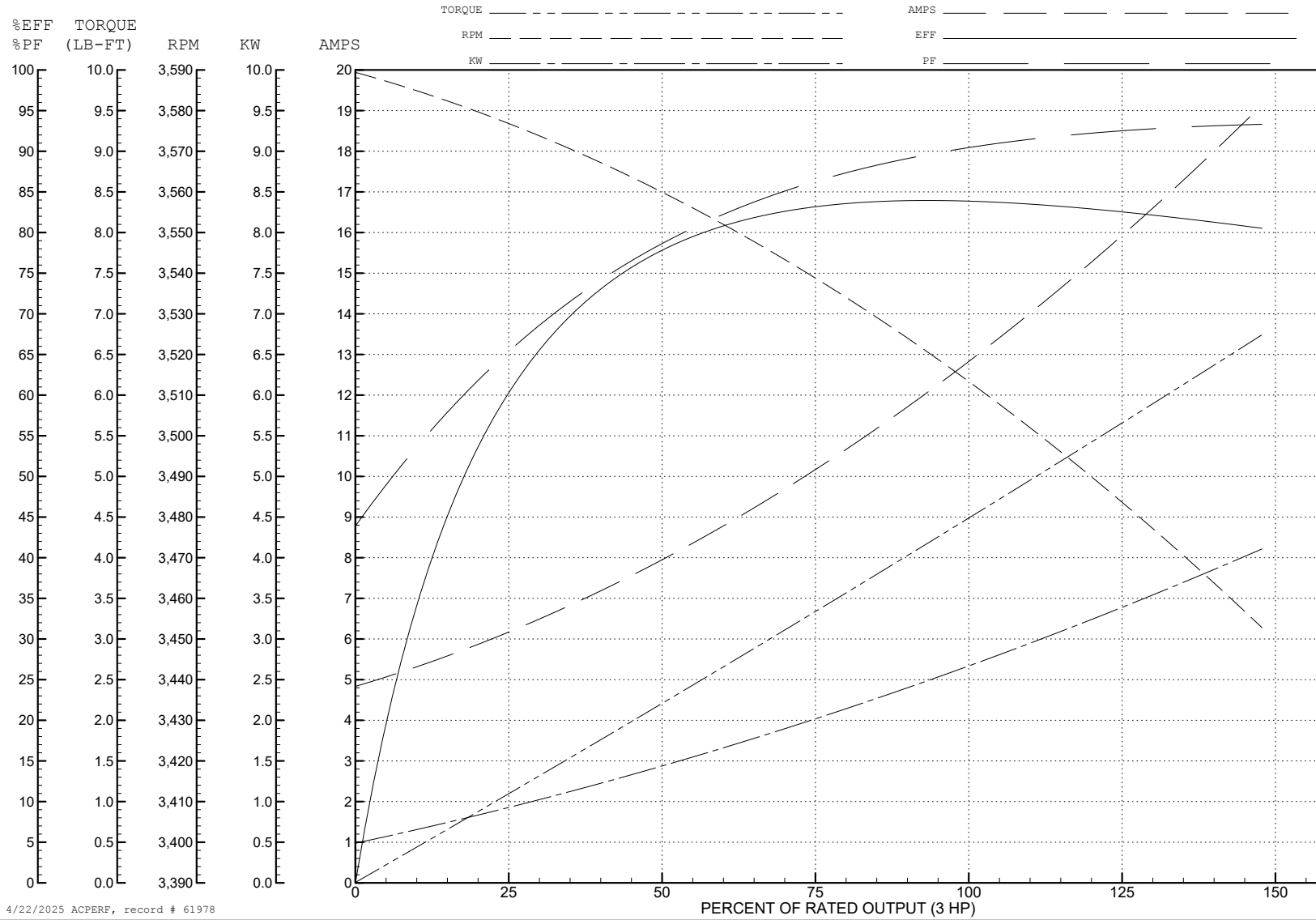
ABB Motors and Mechanical Inc.

WINDING # 35WGY105

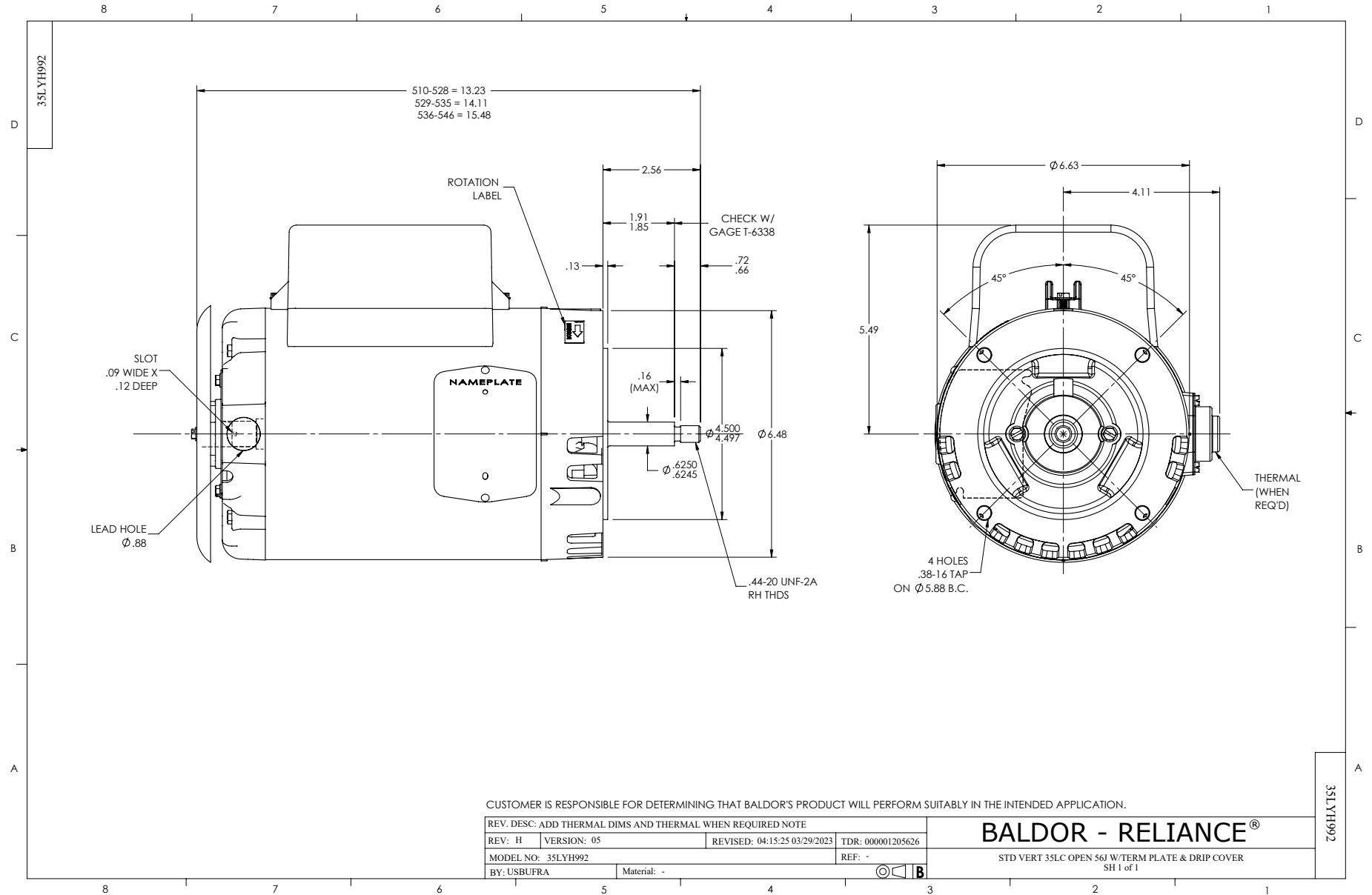
3 HP 1 PH 60 HZ 3450 RPM 230 V 3535LC

Typical performance - not guaranteed values.

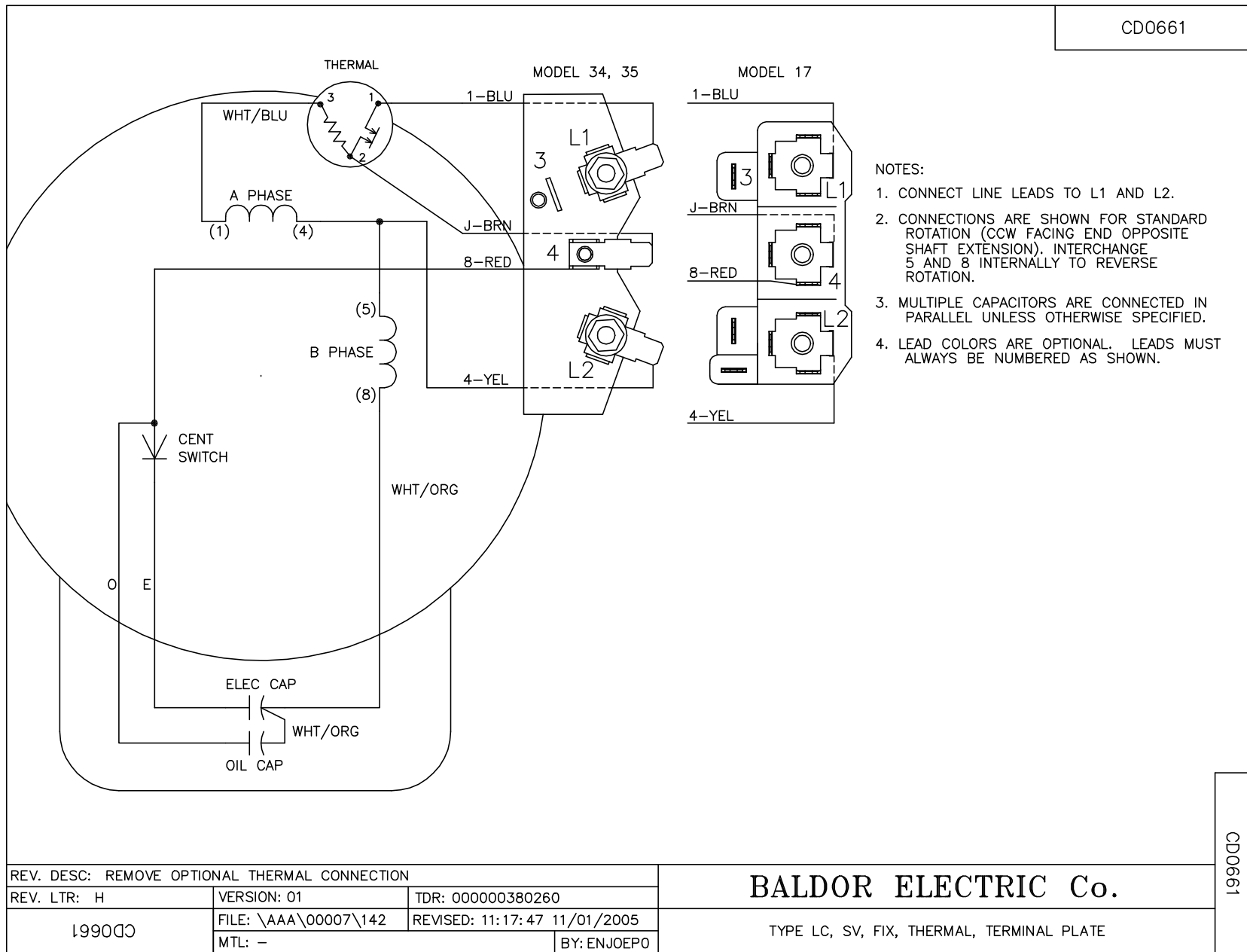
TORQUES (LB-FT): PO=15.5 PU=13 LR=13 LRA=108



4/22/2025 ACPERF, record # 61978



CD0661



REV. DESC: REMOVE OPTIONAL THERMAL CONNECTION		
REV. LTR: H	VERSION: 01	TDR: 000000380260
199000	FILE: \AAA\00007\142	REVISED: 11:17:47 11/01/2005
	MTL: -	BY: ENJOEPO

**BALDOR ELECTRIC Co.**

TYPE LC, SV, FIX, THERMAL, TERMINAL PLATE

CD0661